



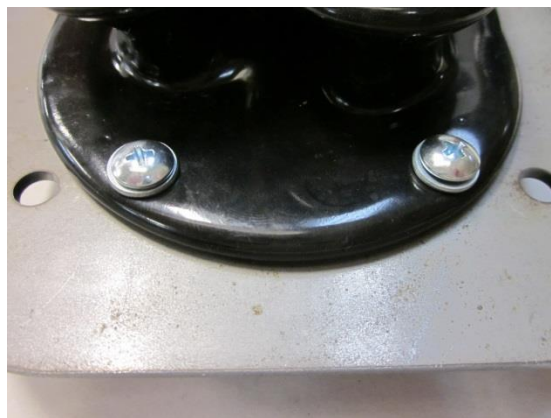
484 County Road 113
Carbondale, CO 81623
970 945 7777
Fax – 8389

Shifter Boot Assembly Instructions

1. Insert hold down ring inside of boot, you will have to stretch the boot a bit



2. Using 10-24 screws, washers and nuts, attach boot to the floor plate



3. Assemble the rest of the shifter (see separate instructions) and position plate on floor where you would like it to be, mark the perimeter holes. Drill them out to 5/16". Bolt floor plate to floor, this will likely require two people.

